



# LAREDO POLICE DEPARTMENT

2019 ANNUAL REPORT

---

# MESSAGE FROM THE CHIEF



On behalf of your Laredo Police Department, I am privileged to present the 2019 Laredo Police Department Annual Report. Throughout this report, you will read about stories of kindness, heroism and the efforts of the men and women in blue in keeping your community, OUR community safe.

Safety is the biggest question always asked of from the police chief, but I am proud to say with an emphatic yes that Laredo is safe. Laredo once again had a significant reduction in crime from that of 2018. The Laredo Police Department's progress in our ongoing efforts to reduce crime and improve the quality of life for all Laredoans and visitors is specifically evident in a daily activity that we often overlook-driving.

In 2019, the Laredo Police Department made it a plan to target fatal motor vehicle accidents in hopes of reducing the amount of fatalities. As a result of new initiatives, Laredo saw a decrease of fatal motor vehicle accidents by 60% in comparison to 2018. Two highlights from this decrease are a 78% reduction in fatal accidents occurring during night time hours which matches a 78% reduction in fatal accidents involving intoxicated drivers.

In order to carry out our mission, we must rely on support and we have been fortunate enough to get plenty of it. The support we have received from city administration and elected officials has been paramount in providing our officers with the better equipment and resources to safeguard our city.

Teamwork is also an integral part of success. Through partnerships with Federal, State and Local law enforcement agencies we continue to ensure the safety of Laredo one day at a time while criminal intelligence shared across the board help us plan for the future.

This report contains statistical and empirical data that reflect a reduction in crime. This reduction in crime is a testament to the hard work and dedication of the men and women in blue who work for YOUR police department that cannot be quantified. Other information deemed relevant to stakeholders may be included, such as a report on operations for manufacturing firms or corporate social responsibility reports for companies with environmentally or socially sensitive operations. In the case of larger companies, it is usually a sleek, colorful, high-gloss publication.

**Claudio Treviño, Jr.**  
*Chief of Police*



# TABLE OF CONTENTS

---

## Section One ..... 4

- Introduction
- Contact Us
- Mission Statement
- Laredo Police Leadership
- Highlights from 2019
- By the Numbers

## Section Two .....11

- LPD in the Community
- Coffee with a Cop

## Section Three ..... 15

- Innovation
- Real Time Crime Center
- National Integrated Ballistic Information (NIBN)
- Peer Support

## Section Four ..... 20

- Records Section
- Communications Unit
- Patrol Division
- Directed Patrol Division
- Criminal Investigative Division

## Section Five ..... 31

- Introduction to NIBRS
- Performance Metrics

# SECTION ONE

Introduction

Contact Us

Mission Statement

Laredo Police  
Leadership

Highlights from 2019

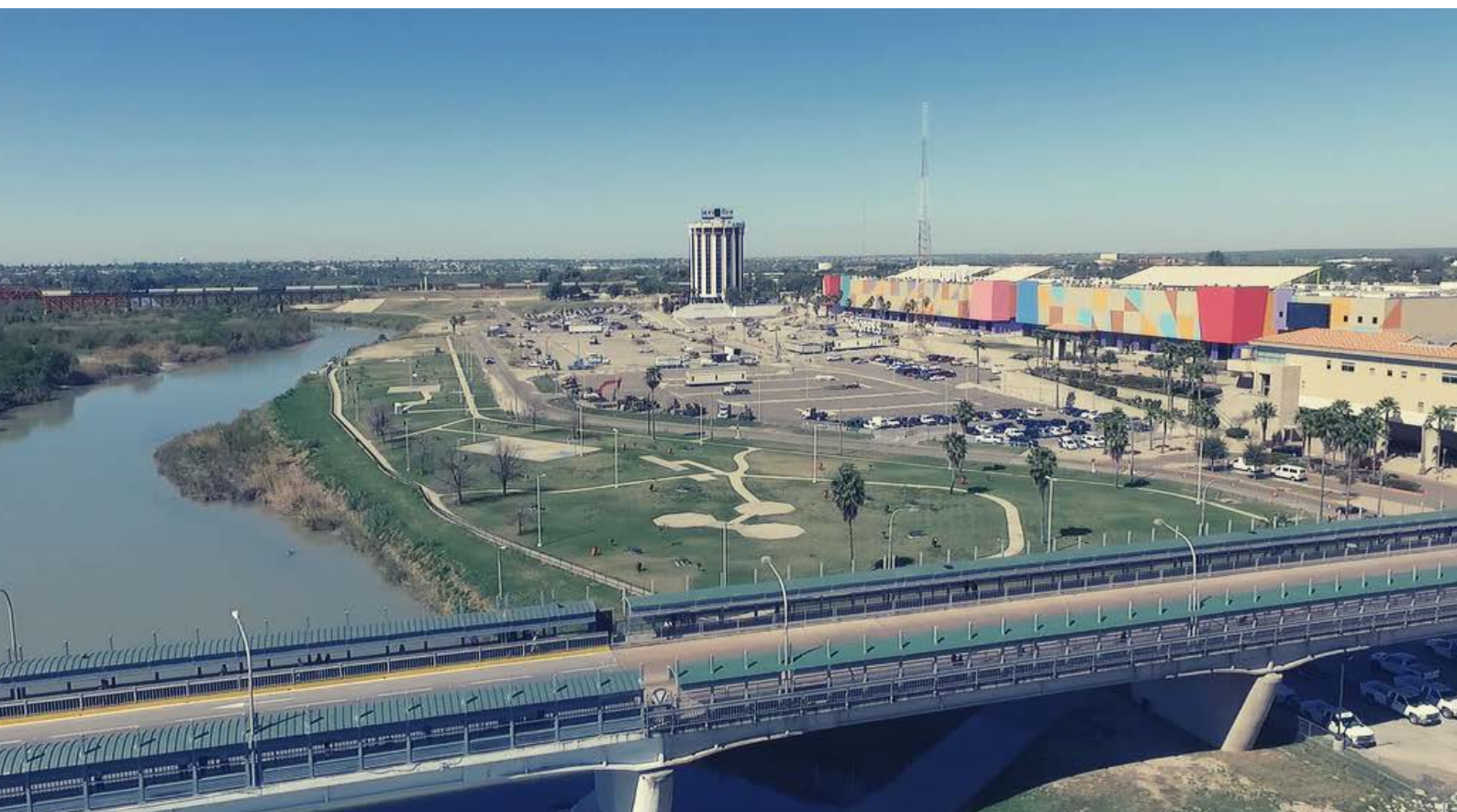
By the Numbers



# Introduction

Located on the banks of the Rio Grande, Laredo was founded in 1755 and is the number one inland port in the nation with over \$231.58 billion in trade in 2019.

The Laredo Police Department is the primary first responding law enforcement agency in the city covering 102.6 square miles and providing services to over 260,654 residents. The Department has an authorized strength of 515 sworn officers and 90 civilian employees and is the 8th largest police department in Texas.



# CONTACT US



## LAREDO POLICE DEPARTMENT HEADQUARTERS

**4712 Maher Avenue  
Laredo, Texas 78041  
Main Number 956-795-2800  
[www.laredopd.com](http://www.laredopd.com)**

### Patrol Division

Front Desk Officer/Lobby  
(956)-795-2828  
(956)-795-2829

Watch Commander  
(956)-795-3134 (956)-795-3135  
(956)-795-3136 (956)-791-8068

### Criminal Investigation Division

Auto Theft Task Force  
(956)-795-2341

Crimes Against Persons  
Crimes Against Property  
(956)-795-2860

Special Investigations Unit and Juvenile  
and Gang Enforcement Team  
(956)-795-2332

### Support

Police Records  
(956)-795-2960

Community Relations Unit  
(956)-795-2900

### Police Administration

Public Information  
(956)-795-2973  
(956)-625-6831

Chief's Office  
(956)-795-2899  
(956)-795-3119

Office of Professional Standards  
(956)-790-1980

## MISSION STATEMENT

---

***It is the mission of the Laredo Police Department to enhance the quality of life in Laredo by establishing a partnership with the community in an effort to preserve life, protect property and enforce the law.***



# LAREDO POLICE LEADERSHIP



*Claudio Treviño, Jr.*  
*Chief of Police*



*Manuel J. Maciel*  
*Assistant Chief of Police*



*Miguel A. Rodriguez, Jr.*  
*Assistant Chief of Police*



*Ricardo Gonzalez*  
*Deputy Chief of Police*



*Enedina R. Martinez*  
*Deputy Chief of Police*

## COMMAND STAFF



*Guadalupe A. Ortiz*  
*Captain- Patrol East*



*Benito A. Martinez*  
*Captain- Patrol West*



*Pedro Sarmiento*  
*Captain- Directed Patrol*



*Gilberto Villarreal*  
*Captain- Criminal*  
*Investigations Division*



*Gabriel E. Martinez, Jr.*  
*Captain- Support Division*





**UNVEILED A REAL TIME CRIME CENTER**

SECURED OVER 6 MILLION DOLLARS IN GRANT FUNDING



**IMPLEMENTED NATIONAL INTEGRATED BALLISTIC INFORMATION NETWORK (NIBIN)**

REDUCED THE NUMBER OF FATALITIES RELATED TO MOTOR VEHICLE ACCIDENTS



**IMPLEMENTED A PEER SUPPORT PROGRAM FOR ALL DEPARTMENT PERSONNEL**

REVISED AND IMPROVED POLICE DEPARTMENTAL POLICY

**GREATLY INCREASED SOCIAL MEDIA PRESENCE AND CAPACITY**

---

2019

# HIGHLIGHTS



# 2019 BY THE NUMBERS



**6**

Homicides



**13**

Fatal Accident  
Victims



**1,473**

Accidents due  
to distracted  
drivers



**117**

Robberies



**9,030**

Traffic  
Crashes



**6,990**

Total  
Arrests



**598**

DWI Arrests-  
Citywide



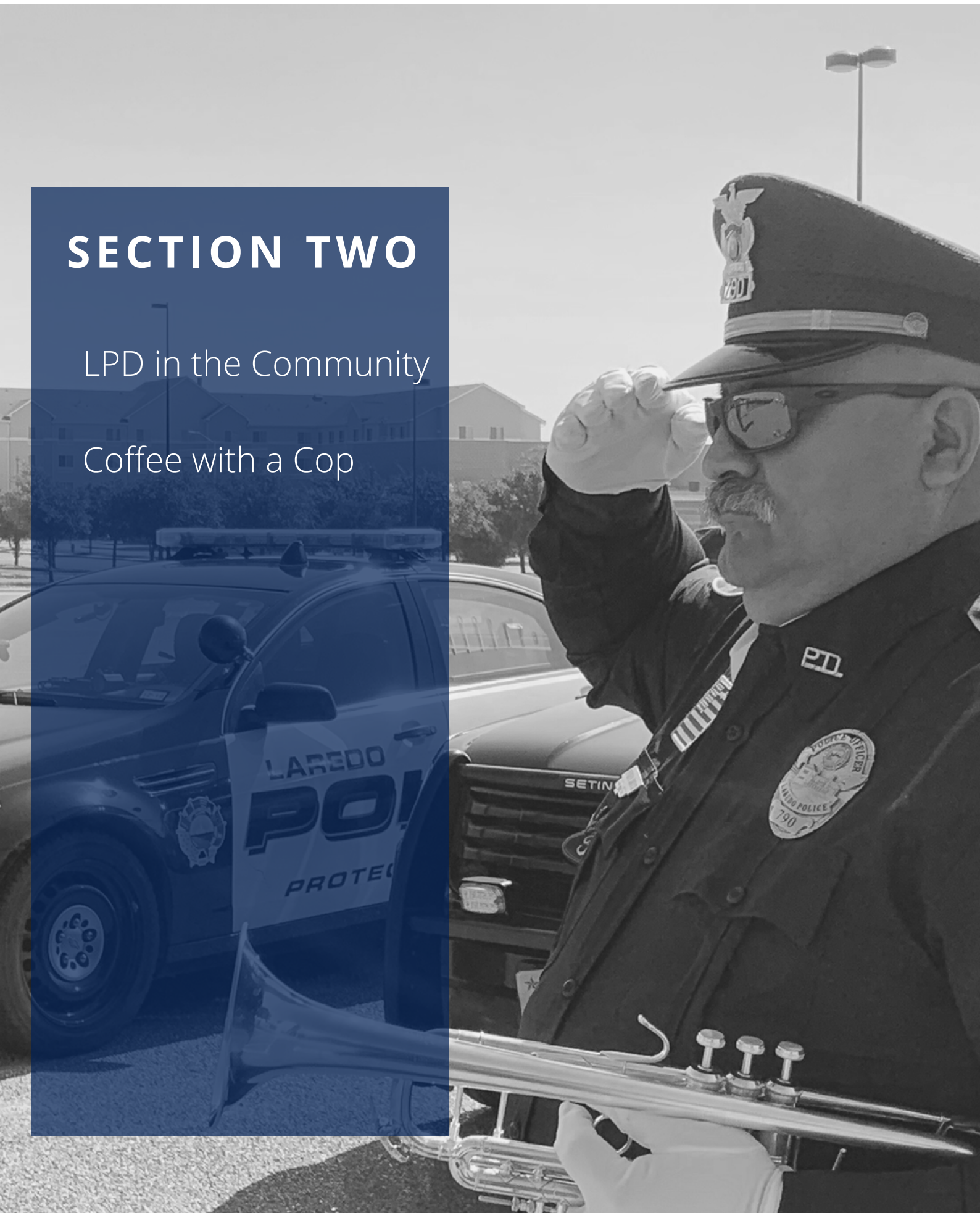
**115**

Pedestrian  
Crashes

## SECTION TWO

LPD in the Community

Coffee with a Cop



## LPD IN THE COMMUNITY



### PET OF THE WEEK

The Laredo Police Department has joined up with Animal Care Services featuring pets in need of a forever home. The partnership has been successful and promotes a great humanitarian goal in getting our four legged friends adopted into a loving family.

### WBCA GRAND PARADE

As part of a month celebration the Washington's Birthday Celebration Grand Parade is a local favorite. The Laredo Police Department provides blanketed security and collaborates with other law enforcement agencies in order to provide the best safety for the public attending the events.



### NATIONAL NIGHT OUT

The Annual National Night Out event enhances the relationship between neighbors and law enforcement while bringing back a true sense of community. The opportunity to be able to communicate and bridge meaningful dialogue is proving more essential than ever.

## LPD IN THE COMMUNITY



### CANCER AWARENESS

The Laredo Police Department joins officers from over 1000 agencies across the nation showing their support during Breast Cancer Awareness month. We stand with and support all survivors and those fighting their battle against cancer, we honor them by wearing pink LPD patches on our uniforms during the month of October.

### AUTISM AWARENESS

We are usually the first to respond to an emergency, so it is critical that LPD officers have a working knowledge of autism, and the wide variety of behaviors people with autism can exhibit in emergency situations.

Our communication and relationship with the autism community and their families will continue to enhance our ability to better serve them.



### LAREDO PD IN SCHOOLS

Our children are the future of our community and by taking the time to meet with them and participate in different activities we knock down the barriers and open the dialogue. They familiarize themselves on how to interact with men and woman in blue and demonstrates we are here to help.

## COFFEE WITH A COP



This Laredo Police Department event has the goal of bringing police officers and the people we serve together to discuss issues that affect and concern our community. We strive to build stronger relationships with our fellow Laredoans by meeting in a friendly environment and enjoying a conversation over a cup of coffee.

No agenda, no speeches. This is just an opportunity to get to know their Laredo police officers on their own terms.

Coffee with a Cop is a monthly event hosted by our local McDonald's Restaurants with fourteen locations in different areas of the city.



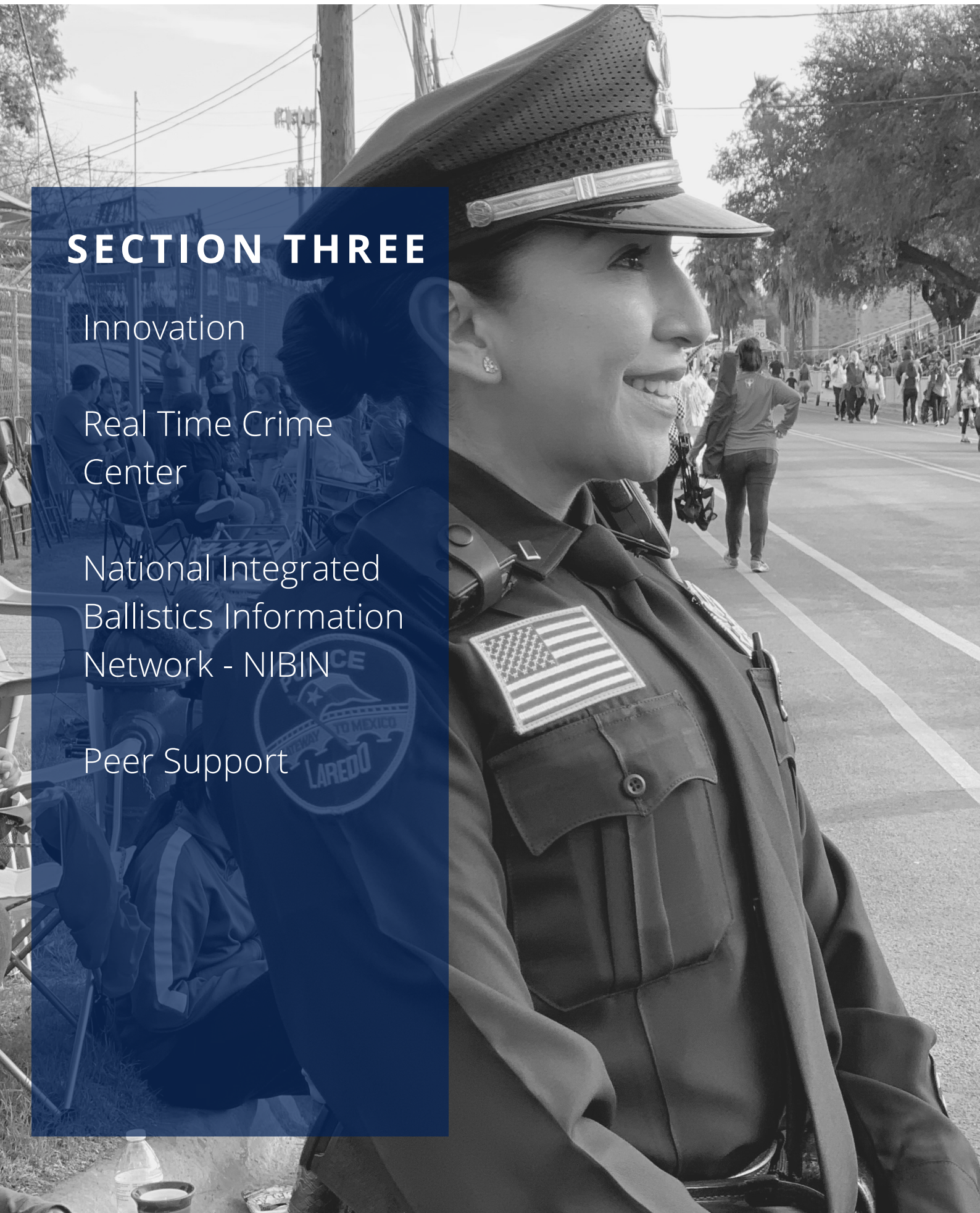
## SECTION THREE

Innovation

Real Time Crime  
Center

National Integrated  
Ballistics Information  
Network - NIBIN

Peer Support



# INNOVATION

---



Law enforcement, as a whole, has the primary role of safeguarding society. The relationship between department and community can be evidenced through the evolution of both. As a community evolves, the department must adapt and change while maintaining the core values of service, safety and dedication to the community. In an effort to continue with an evolving society, the Department implemented new technology in crime prevention and investigation.







## REAL TIME CRIME CENTER

The Real Time Crime Center's technology is aimed at providing real-time intelligence. Investigators at the center are able to monitor surveillance video and tell officers responding to crime scenes additional information about suspects to help them while responding to calls.

The Real Time Crime Center has access to approximately 500 cameras in different areas of our city that can be monitored by investigators assigned to the center. Much of the information, including video feeds, is sent to officers. The center is equipped to provide instant intelligence information to the Laredo Fire Department, Laredo EMS, and other local law enforcement agencies and public safety partners. The Real Time Crime Center is manned and monitored 24 hours a day, 7 days a week, 365 days a year.

The Laredo Police Department will continue to bring new technology to the department to better serve our community.

## NATIONAL INTEGRATED BALLISTICS INFORMATION NETWORK - NIBIN

The National Integrated Ballistic Information Network is a specialized computer network which contains digital images of recovered pieces of ballistic evidence. NIBIN now has a residence with us at the Laredo Police Department in cooperation of the Bureau of Alcohol, Tobacco, Firearms and Explosives, which will greatly enhance our abilities to compile and match ballistic evidence in criminal investigations. NIBIN cost \$250,000 which was at no cost to LPD.

It is currently in use in ongoing criminal investigations with Laredo PD. NIBIN is currently in use in ongoing criminal investigations with Laredo PD. Despite its short time in our department the LPD has successfully uncovered essential evidence which was used in successful prosecutions and eventual convictions of defendants involved in shootings.

In 2018 Laredo Police recorded 359 firearm related cases. The need for a ballistic database, to be able to match casings with firearms, will only continue to enhance our law enforcement objectives and maintain our safe community.

Now that Laredo PD is a NIBIN site for the nation-wide network we can collect and process ballistic evidence from other agencies. These ballistic collections will build up an extensive database which will work towards identifying casings coming from the same weapons and eventually identify a suspect. The need for new technologies will continue to keep Laredo a safe community.



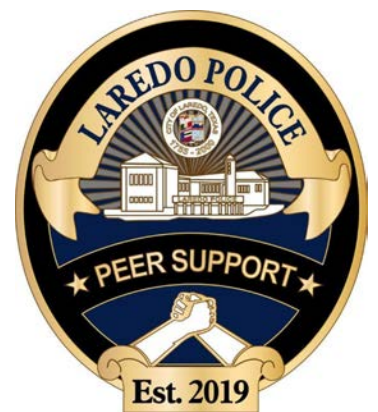


## PEER SUPPORT

### *Officers Supporting Officers*

The Department has recently established a Peer Support Program comprised of trained departmental employees. The purpose of the program is to prevent or lessen the potential negative impact of stress upon employees by providing emotional support, information, and assistance.

The program will provide employees psychological and emotional support through one-on-one discussions, pre-incident education, stress management, spousal/significant other support, on-scene support and post incident briefing.



## SECTION FOUR

Records Section

Communications Unit

Patrol Division

Directed Patrol Division

Criminal Investigative  
Division



## RECORDS SECTION

Comprised of civilian and sworn personnel, the Records Section is tasked with managing, storing and record authenticating all official LPD documents and reports. The section has undergone significant software and equipment modernization which in turn increases productivity and affords electronic availability of police records.

# 22,598

*Case Reports*

# 16,451

*Number of Reports Sold*

# 9,031

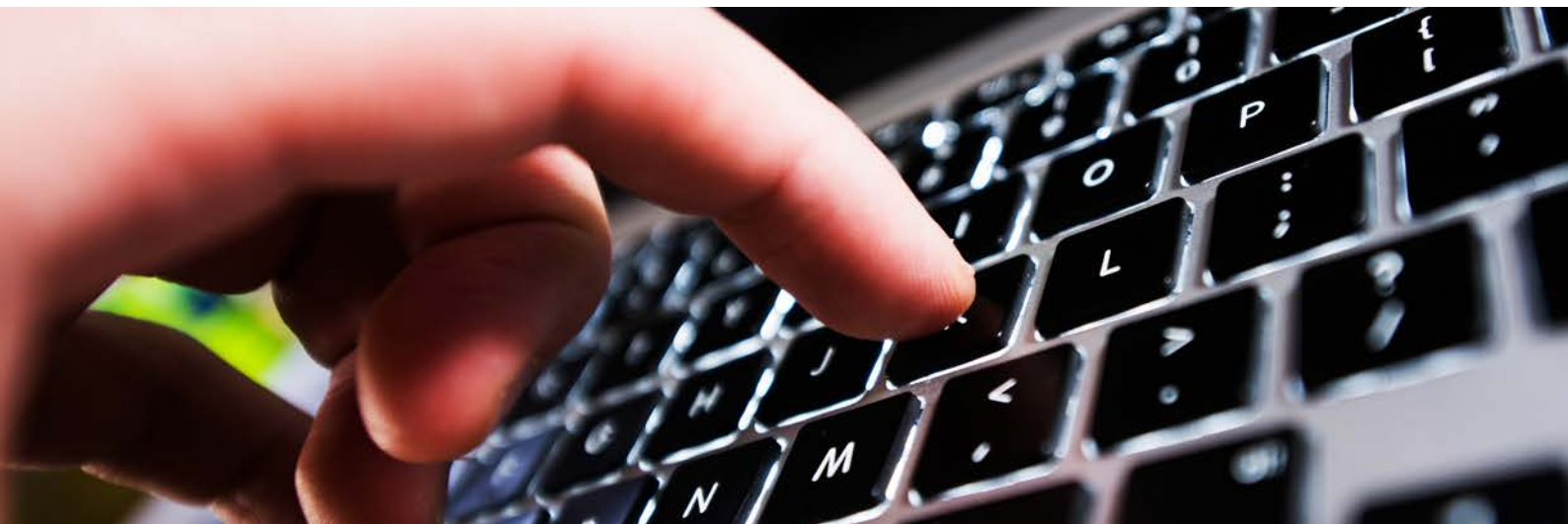
*Accident Reports*

# 4,404

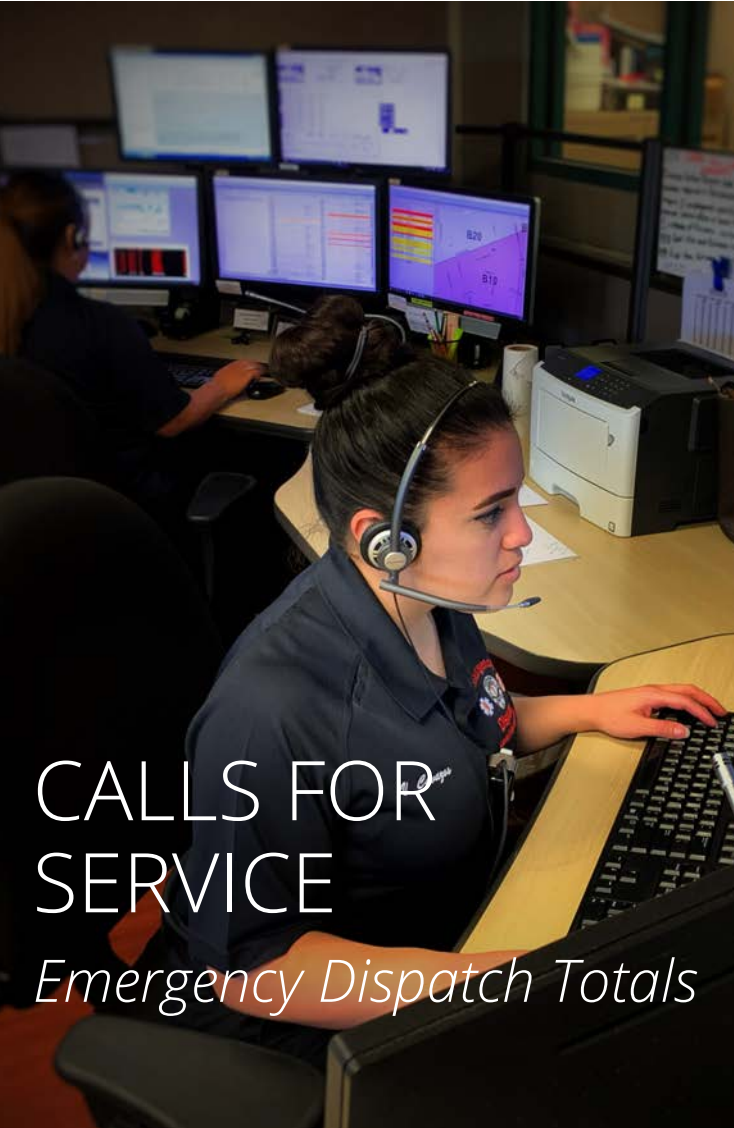
*Number of Reports requested on-line*

# 31,629

*Total*



## COMMUNICATIONS UNIT



### CALLS FOR SERVICE

*Emergency Dispatch Totals*

# 151,995

*911 Calls*

# 279,359

*Non 911 Calls*

# 431,354

*Total Calls for Service*



# 858

*Texts to 911  
first year of service*

The Laredo Police Department Communications Unit consists of dedicated men and women answering calls for service and dispatching police officers and fire personnel to calls.

## PATROL DIVISION

The Patrol Division's mission is to “protect and serve”. Their primary objective is public safety and crime deterrence of assigned beats within certain geographic locations and adjacent areas. Patrol officers are generally first on the scene for most emergency calls and undergo continuous advanced training in order to enhance and improve first response service. Pictured here are some Officers and Supervisors of both East and West Side Patrol Divisions.



***East Side Patrol  
-I Platoon-***



***West Side Patrol  
-C Platoon-***

## DIRECTED PATROL DIVISION

The Directed Patrol Division is part of the uniformed patrol section and includes three different units each charged with specific duties.

### *Park Police*

The elements of this unit are tasked with monitoring all city parks for any violations while ensuring the safety of the residents who actively use them.



### *Traffic (Motors) Unit*

Serves as the primary enforcement of any motorist violations. The officers in this unit also serve as the Department's crash team investigators, responding to fatal accidents or accidents involving serious injuries.



### *Ordinance Unit*

Responds to quality of life calls for service, assisting the City of Laredo Code Enforcement and 311 call centers, checking for abandoned vehicles, violations of city ordinances, and court officers for Municipal Court.








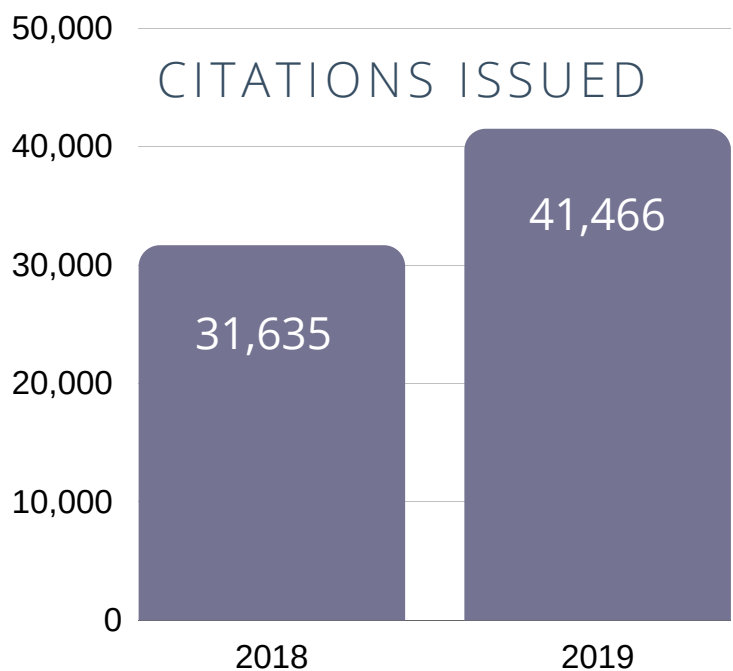
## Traffic Statistics

Laredo Police Officers, in addition to enforcing all criminal laws, concentrate daily on enforcement of traffic laws. Their duties include accident reports and commercial motor vehicle traffic enforcement.

The Traffic Section, primarily address traffic enforcement, accident investigations, and rely on state of the art equipment to help reconstruct how the accident occurred.

	 Fatal Crashes	 Fatality Victims	 DWI-Related Crashes
2018	29	32	202
2019	12	13	173

Month Likely to Crash  
**MAY**  
Day Likely to Crash  
**FRIDAY**  
Time Likely to Crash  
**5:00PM**



## CRIMINAL INVESTIGATIVE DIVISION

The mission of the CID is to provide the highest quality criminal investigation support to the Laredo Police Department by conducting timely and thorough criminal investigations using advanced techniques and forensic equipment.

Motivated only by a search out, they collect all available evidence surrounding each case to exonerate the innocent and substantiate the culpability of the guilty. CID detectives recognize the responsibilities to the community they serve and are committed to investigating all criminal allegations in an ethical and impartial manner with sensitivity towards the needs of victims and witnesses.



*CRIMES AGAINST PERSONS  
CRIMES AGAINST PROPERTY  
SPECIAL INVESTIGATIONS UNIT  
CRIMES AGAINST PROPERTY  
NARCOTICS AND VICE  
CRIME VICTIMS' PROGRAM*

## Crimes Against Persons Unit (CAPERS)

Investigators are directly responsible for specific part 1 offenses which include; Homicide, Robbery, Death Investigations, and Assaults. As investigators, they conduct interviews with potential witnesses and suspects, review records, monitor the activities of suspects, and participate in arrests. Laredo Police Department Investigators are thoroughly trained and most have many years of experience investigating violent crimes.

<b>Crime Type</b>	<b>2017</b>	<b>2018</b>	<b>2019</b>
<b>Homicide</b>	<b>14</b>	<b>11</b>	<b>6</b>
<b>Agg. Sexual Offense</b>	<b>114</b>	<b>145</b>	<b>141</b>
<b>Robbery</b>	<b>154</b>	<b>141</b>	<b>117</b>
<b>Aggravated Assault</b>	<b>561</b>	<b>594</b>	<b>510</b>
<b>Simple Assault</b>	<b>2450</b>	<b>2595</b>	<b>2977</b>
<b>Totals</b>	<b>3291</b>	<b>3486</b>	<b>3751</b>

## Crimes Against Property Unit (CAPROS)

Investigators are directly responsible for property & white collar related offenses which include; Burglaries, Thefts, Identity Theft, Fraud, Cyber Crimes and Animal Cruelty cases. With the potential annual loss of thousands of dollars in property theft crimes and millions of dollars of potential loss in cargo thefts, the detectives of this unit are prepared with the best training and determination to solve even the most sophisticated theft crimes.

<b>Crime Type</b>	<b>2017</b>	<b>2018</b>	<b>2019</b>
<b>Burglary (w/force)</b>	<b>1532</b>	<b>423</b>	<b>490</b>
<b>Burglary (no force)</b>	<b>483</b>	<b>238</b>	<b>231</b>
<b>Theft</b>	<b>10088</b>	<b>5506</b>	<b>3984</b>
<b>Motor-Vehicle Theft</b>	<b>1482</b>	<b>169</b>	<b>181</b>
<b>Vandalism</b>	<b>2647</b>	<b>1163</b>	<b>1392</b>
<b>Totals</b>	<b>16232</b>	<b>7499</b>	<b>6278</b>

### Special Investigations Unit (S.I.U.)

S.I.U. Investigators are responsible for criminal cases involving; Sexual Assault, Child Abuse, Sex Crimes, Sex Offender registration and Probation compliance monitoring, and domestic violence cases. Despite the delicate nature of their field of investigation, each Investigator is determined to solve the crime at hand while always maintaining professionalism and sensitivity to the victims of sex crimes.

Crime Type	2017	2018	2019
Cases Assigned	2210	2244	2162
Felonies	722	1110	1099
Misdemeanors	1290	1132	1055
Warrants	394	437	544
Arrests	394	53	179
Sex Offender Reg.	500	554	614
<b>Totals</b>	<b>5510</b>	<b>5530</b>	<b>5653</b>

### Narcotics and Vice Unit

Investigators of the Narcotics and Vice Unit directly operate the surveillance, arrest and seizure of “street level narcotics” and its participants. The section is also responsible for “vice crime” such as prostitution, promotion of prostitution and the gathering of intelligence for the purposes of advancing narcotics investigations through the development of confidential informants and undercover work. This investigative section works closely alongside other LPD divisions and also partners alongside other law enforcement agencies in order to more effectively combat criminal elements in the City of Laredo.

Crime Type	2017	2018	2019
Marijuana (lbs)	4322	1440	25987
Cocaine (lbs)	12.5	17.2	3.5
Heroin (lbs)	0.61	2.48	55.28

Crime Type	2017	2018	2019
Cases Assigned	183	245	310
Arrests	127	248	249

## *Auto Theft Task Force (ATTF)*

The focus of the Laredo ATTF is to deter, investigate and prosecute vehicle theft and burglary of vehicles. The team identifies local trends and patterns of vehicle theft through collective crime analysis. They also provide public education concerning burglary of vehicles, motor vehicle theft, and insurance fraud.



<i>Crime Type</i>	<i>2017</i>	<i>2018</i>	<i>2019</i>
<i>Stolen Vehicles</i>	<i>170</i>	<i>169</i>	<i>181</i>
<i>Stolen Car Recoveries</i>	<i>209</i>	<i>142</i>	<i>142</i>
<i>Criminal Arrests</i>	<i>288</i>	<i>248</i>	<i>249</i>

### *Juvenile and Gang Enforcement Team (JAGET)*

The Laredo JAGET specializes on investigations where violent offenders often associated with criminal organizations are involved. They also serve as lead detectives for all missing persons, crimes involving juveniles and runaways.

<b>Crime Type</b>	<b>2017</b>	<b>2018</b>	<b>2019</b>
<b>Cases Assigned</b>	995	879	892
<b>Felonies</b>	82	106	150
<b>Misdemeanors</b>	383	392	320
<b>Status Offender</b>	385	281	20
<b>Missing Persons</b>	149	103	129
<b>Arrests</b>	121	164	121



## SECTION FIVE

Introduction to NIBRS

Performance Metrics



As recommended by professional law enforcement organizations, the FBI has made nationwide implementation of NIBRS a top priority, as it can provide more useful statistics to promote constructive discussion, measured planning and informed policing.

implemented to improve the overall quality of crime data collected by law enforcement, NIBRS captures details on each single crime incident - as well as on separate offenses within the same incident- including information on victims, known offenders, relationships between victims and offenders, arrestees, and property involved in crimes.

Unlike data reported through the UCR Program's traditional Summary Reporting System (SRS)- an aggregate monthly tally of crimes - NIBRS goes much deeper because of its ability to provide circumstances and context for crimes like location, time of day, and whether the incident was cleared.



# Introduction to NIBRS



# Performance Metrics

## UCR Summary Crime

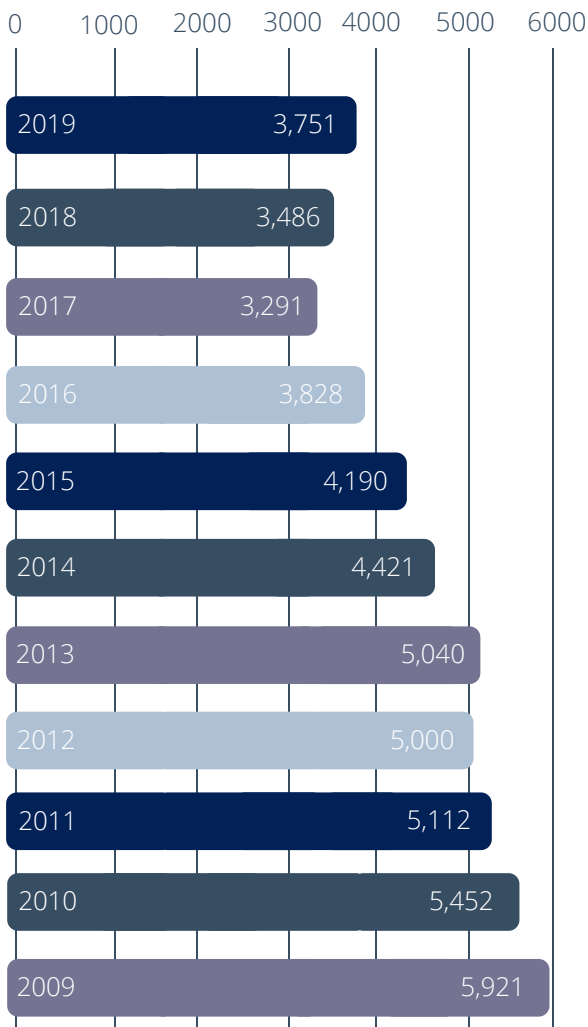
**Overall Crime DOWN 55% since 2009**



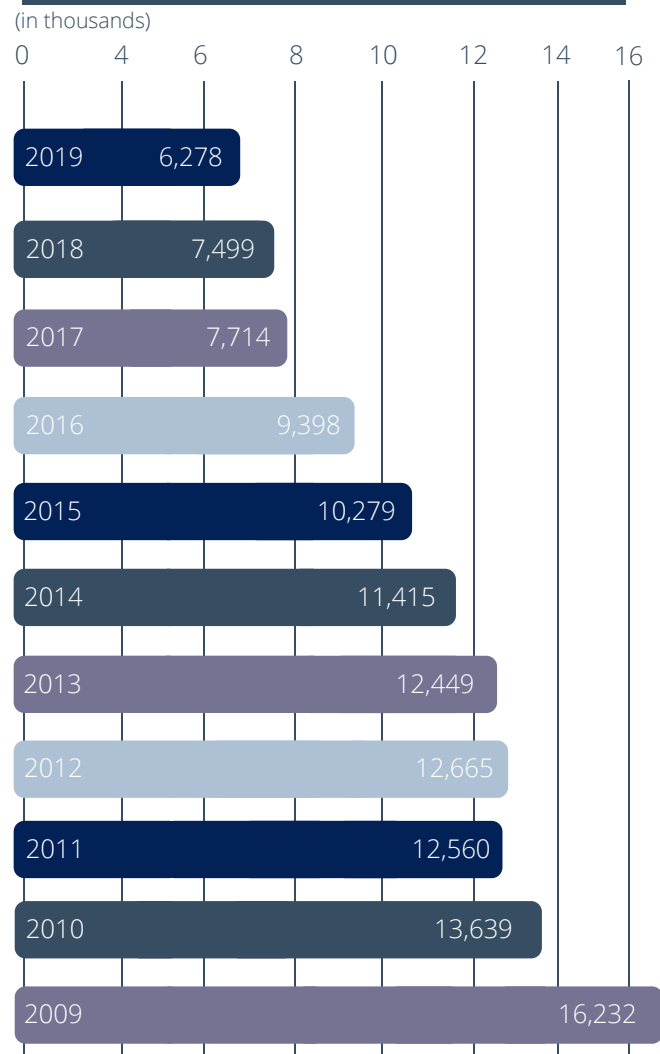
**VIOLENT CRIMES** are offenses which involve force or threat of force. Per FBI Uniform Crime Reporting definitions, violent crime is composed of four offenses, murder, rape, robbery, and aggravated assault.

**PROPERTY CRIMES** are theft-type offenses of money or property, where there is no force or threat of force against the victims. Per FBI Uniform Crime Reporting definitions, property crime includes burglaries, thefts, and motor vehicle thefts.

**Violent crimes are UP +8% from 2018 to 2019**



**Property crimes are DOWN -16% from 2018 to 2019**





# ***POLICE***

***This report is dedicated to the hard work and commitment  
to service of the men and women of the  
Laredo Police Department.***